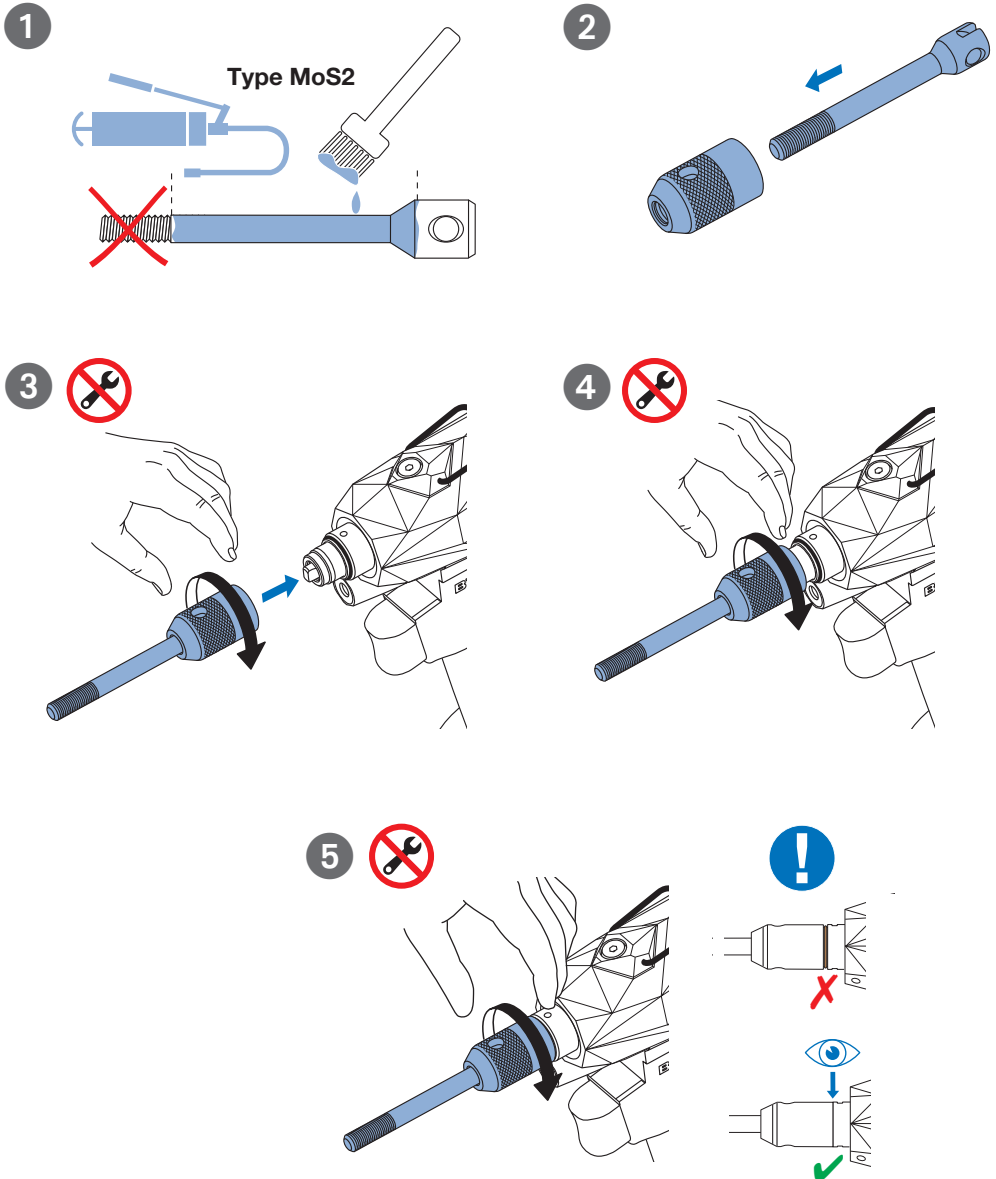


1. Greasing the mandrel & fully screwing the traction bush

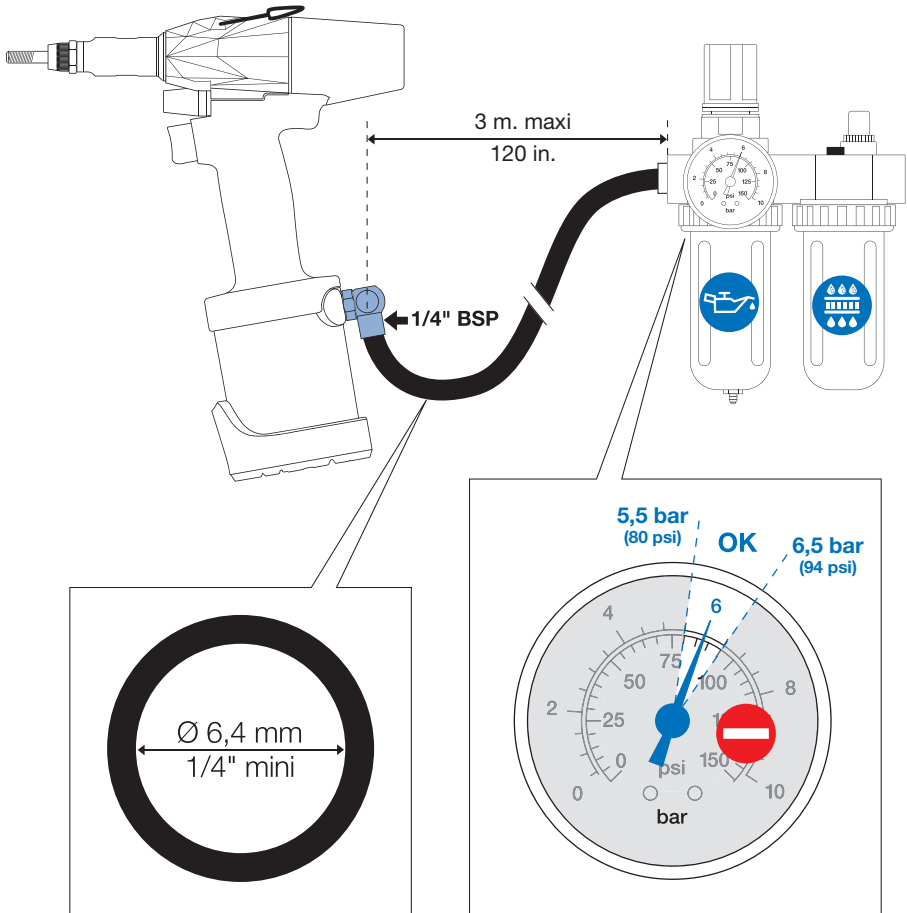
To ensure that the tool works properly, it is essential that the setting mandrel is well greased, and the traction bushing is fully screwed in.



2. Ensure the right air pressure and use a FRL device

To ensure that the tool works properly, it is important to ensure that the air pressure is between 5.5 and 6.5 bar. The use of an FRL kit is strongly recommended.

! Note: to achieve 18 kN, it could be necessary to have 6 bars minimum.



Reference FRL kit

<p>FRL kit</p>		<p>236 599 00 036</p>
----------------	---	-----------------------